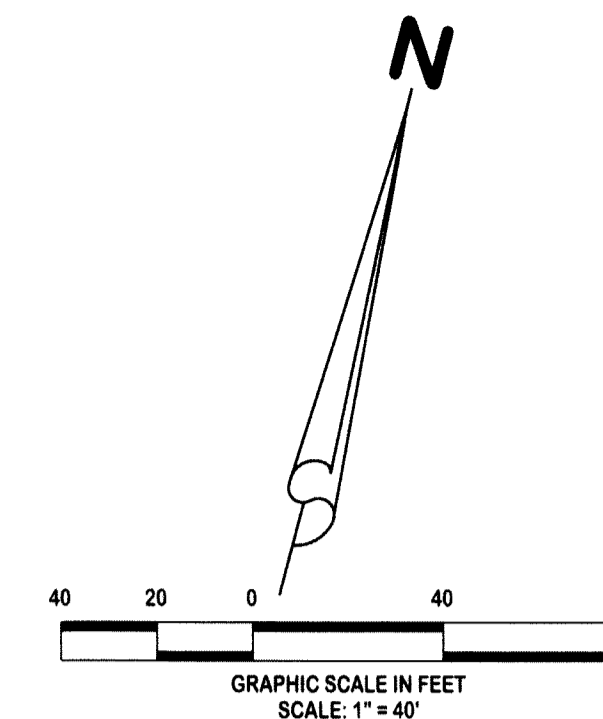
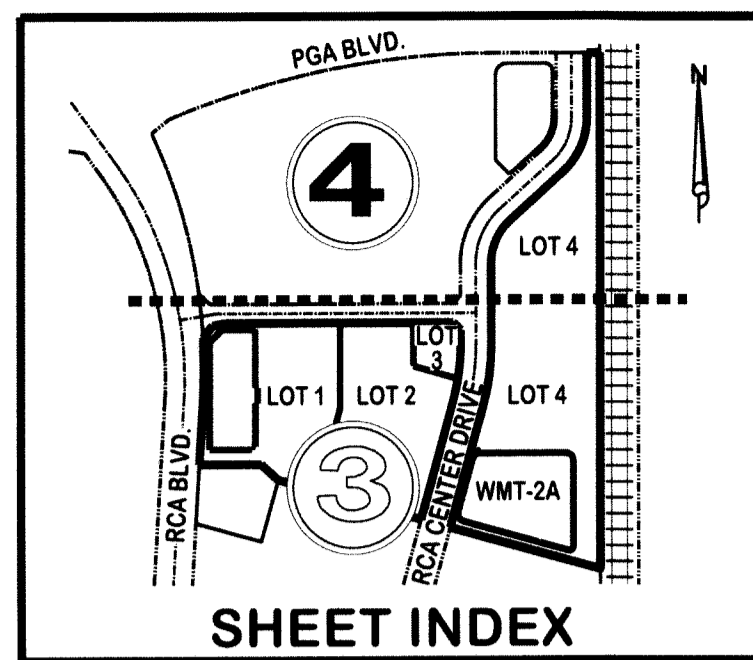


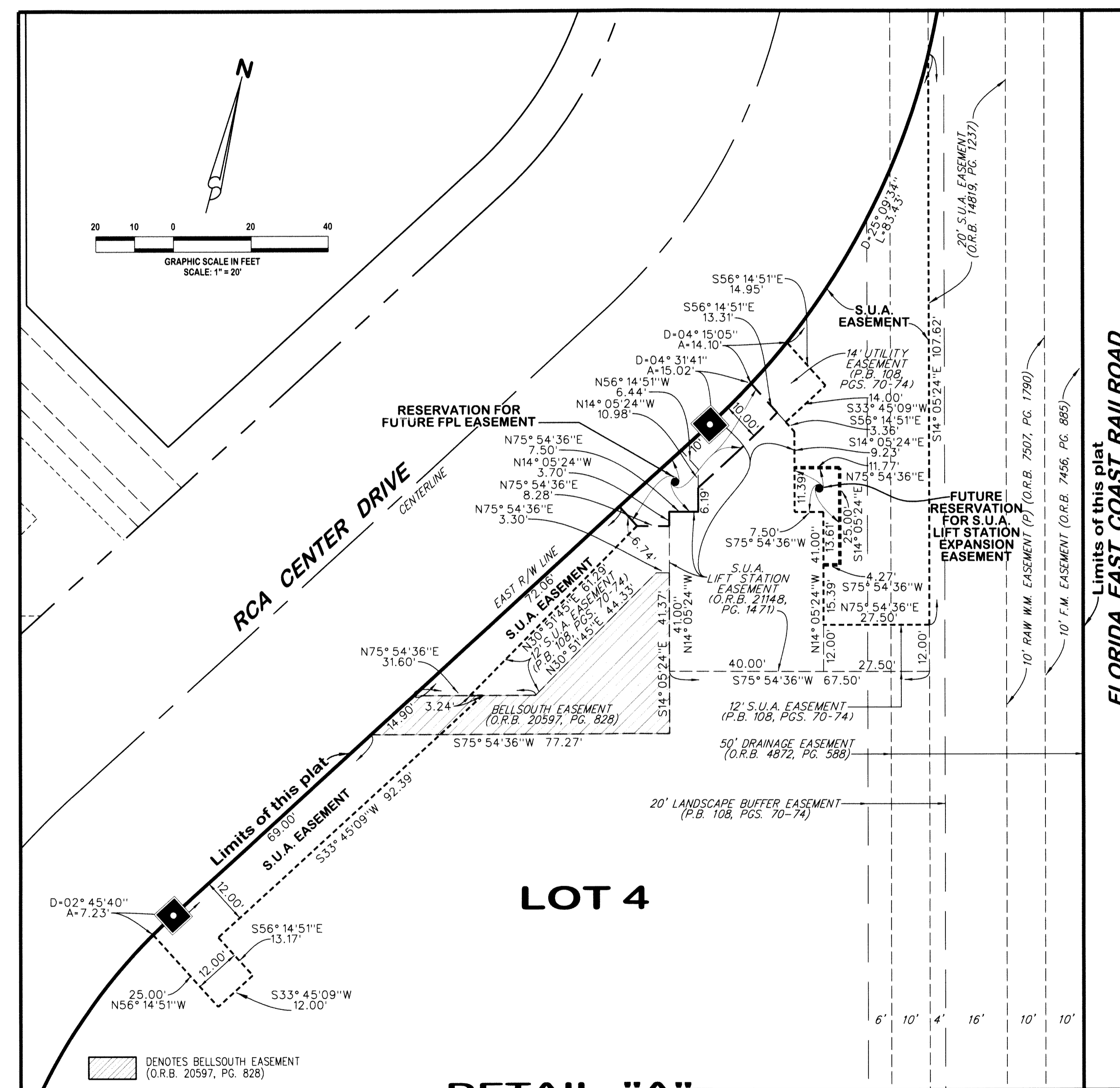
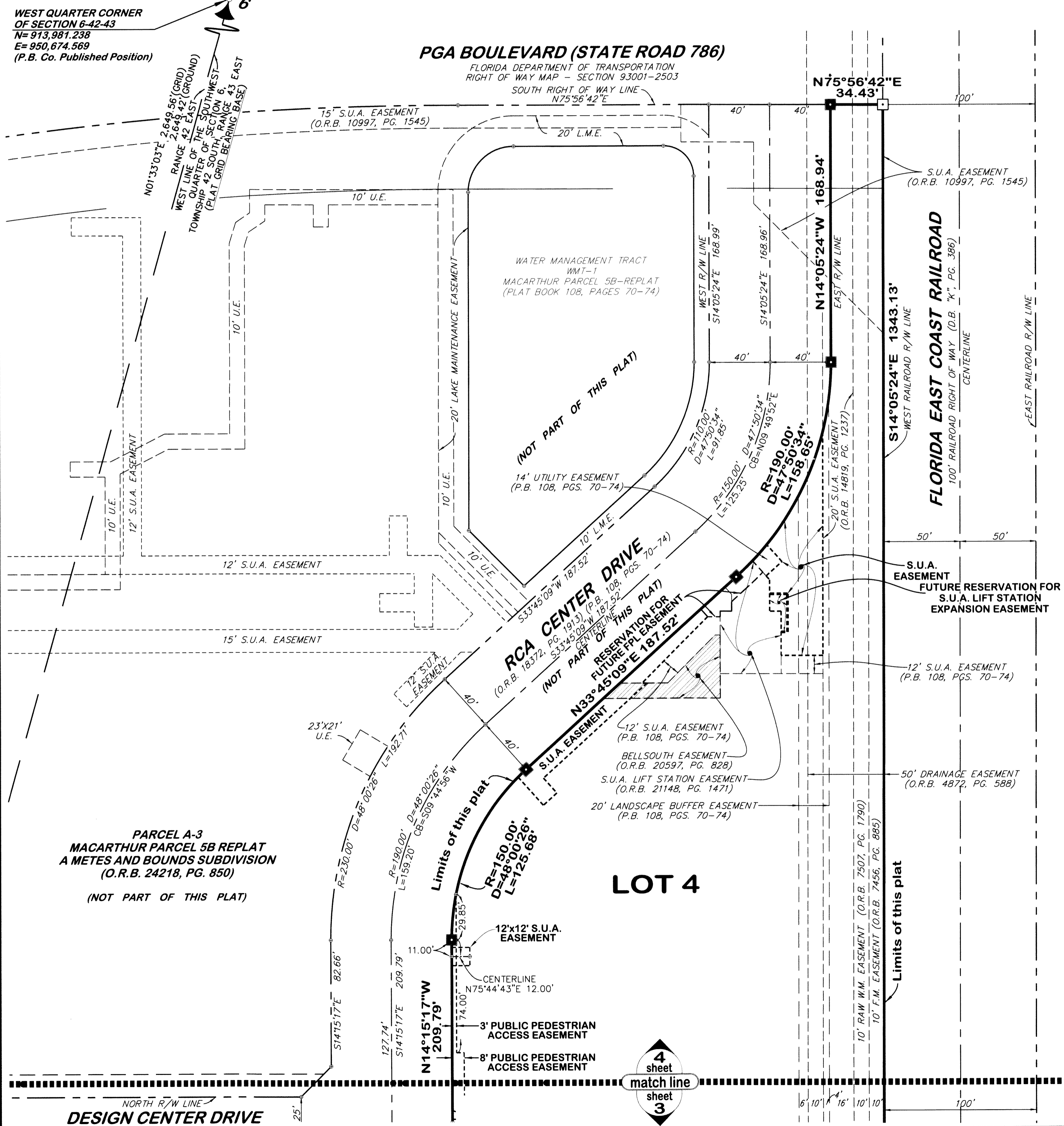
PGA STATION, A P.U.D.

BEING A REPLAT OF PARCEL C AND WATER MANAGEMENT TRACT WMT-2, AS SHOWN ON THE PLAT OF MACARTHUR PARCEL 5B-REPLAT, RECORDED IN PLAT BOOK 108, PAGES 70 THROUGH 74, AND ALSO BEING A REPLAT OF PARCELS B, B-3 AND B-4, AS SHOWN ON THE METES AND BOUNDS SUBDIVISION RECORDED IN OFFICIAL RECORD BOOK 29615, PAGES 252 THROUGH 288, PUBLIC RECORDS OF PALM BEACH COUNTY, FLORIDA AND ALSO LYING IN SECTION 1, TOWNSHIP 42 SOUTH, RANGE 42 EAST AND SECTION 6, TOWNSHIP 42 SOUTH, RANGE 43 EAST CITY OF PALM BEACH GARDENS, PALM BEACH COUNTY, FLORIDA

APRIL 2022



169
SHEET 4 OF 5



- ABBREVIATIONS:**
- DA = CURVE'S DELTA ANGLE
 - R = CURVE'S RADIUS
 - CL = CURVE'S ARC LENGTH
 - CB = CURVE'S CHORD BEARING
 - CL = CURVE'S CHORD LENGTH
 - CONC. = CONCRETE
 - FPL = FLORIDA POWER & LIGHT CO.
 - L.A.E. = LIMITED ACCESS EASEMENT
 - L.B.E. = LANDSCAPE BUFFER EASEMENT
 - MON. = MONUMENT
 - O.R.B. = OFFICIAL RECORD BOOK
 - P.B. = PLAT BOOK
 - L.B.E. = POINT OF CURVATURE
 - P.T. = POINT OF TANGENCY
 - PCP = PERMANENT CONTROL POINT
 - PG. = PAGE
 - PRM = PERMANENT REFERENCE MONUMENT
 - R/W = RIGHT OF WAY
 - S.U.A. = SEACOAST UTILITY AUTHORITY
 - W/ = WITH

- LEGEND:**
- = DENOTES FOUND "PRM" FOUND 4"x4" CONC. MON. W/ DISK STAMPED "PRM LB 4431" UNLESS OTHERWISE NOTED
 - = DENOTES SET "PRM" SET 4"x4" CONC. MON. W/ DISK STAMPED "PRM LB 4431"
 - = DENOTES SET "PRM" SET MAG NAIL W/ DISK STAMPED "PRM LB 4431"

LIDBERG LAND SURVEYING, INC.
 LB 4431 675 West Indiantown Road, Suite 200, Jupiter, Florida 33458 TEL. 561-746-8454

CAD. K:\JUST \ 064243 \ 98-1580 \ 98-1580-306 \ 98-1580-306.DGN		
REF.		
FLD. -	PG.	JOB 98-1580-306
OFF. CASASUS		DATE MARCH 2022
CKD. D.C.L.	SHEET 4 OF 5	DWG. 098-1580P